



**a is for  
acorn**

**The mighty oak grows  
from an acorn.**



**b**  
**is for**  
**branch**

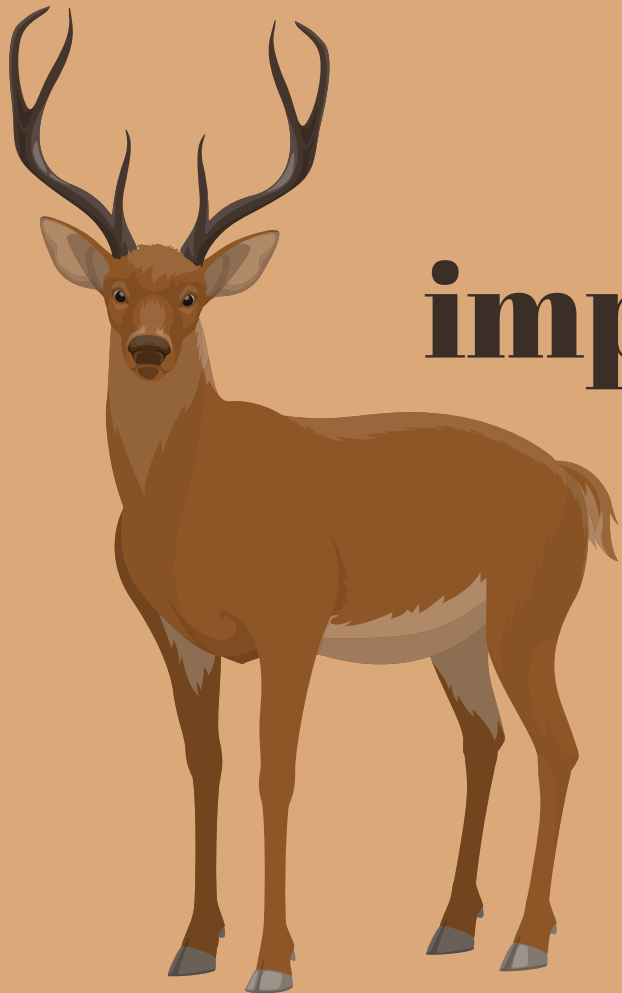
**A branch is the  
arm of a tree.**

**C** is for  
**cone**



**A cone is  
the seed for  
pine trees.**

**d is for deer**



**A deer is  
important to the  
health of the  
woods.**

# **E is for evergreen**

**Evergreen trees stay  
green all year.**



**f**  
**is**  
**for**  
**fern**

**Ferns are**  
**important for**  
**wildlife in the**  
**woods.**



**g** is for **grass**

**Grass covers the  
ground in a forest.**



**h** is for  
**h**ollow  
**h**ole

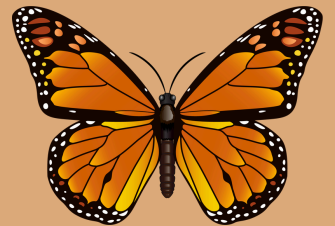


**Holes**  
**provide a**  
**home for**  
**many**  
**animals.**

**i** is for insect



**Insects are  
pollinators.**



**j** is for **jay**



**Blue jays  
disperse  
seeds in  
the forest.**

**K** is for  
**k** knot



**Knots are  
spots where  
branches  
grew.**

**I is for  
leaves**

**Leaves help  
trees breathe.**



# **M** is for **magnolia**

**Magnolia is  
the Louisiana  
State Flower.**



**n**

**Birds make  
their home**

**in a nest.**

**is**

**for**

**nest**





**O** is for  
**oak**

**Oaks are  
strong trees.**

**P** is for  
**pine**

**A pine is a  
type of  
evergreen.**



**Q** is for  
**queen bee**



**Bees are  
important  
pollinators.**



**R** is for roots

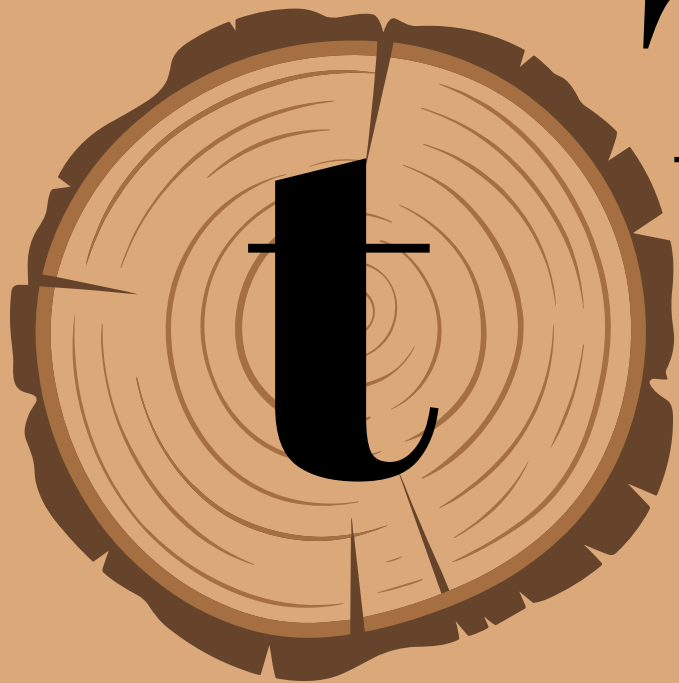
**Trees needs roots to take  
up water and nutrients.**

**S is for seeds**

**Trees  
reproduce  
with seeds.**



**S**



**T is for  
trunk**

**The trunk holds up  
the tree and supports  
it as it grows.**

# **U is for under story**

**The understory  
is where the  
plants under the  
trees live.**





**W. is for  
vines**

**Vines climb up  
trees in the woods.**

**W**  
**is for**  
**water**

**Trees need**  
**water to live.**

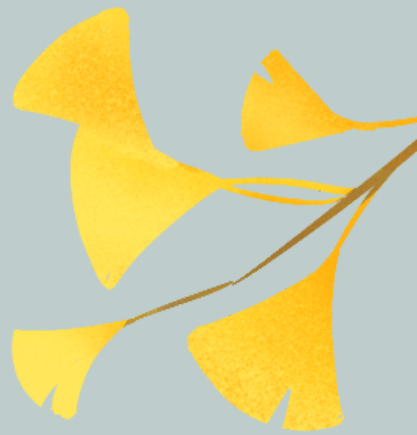


**X** is for  
**eX**plorer

**A little  
woman in the  
woods is an  
explorer.**



**y** is for  
**yellow**  
**leaves**



**Tree leaves**  
**turn yellow**  
**in the fall.**



**Z**

**The  
sleeping**

**bear**

**hibernates**

**in the**

**winter.**

**is for**

